



JULY 27 - AUGUST 1, 2026

Portes du Haut-Doubs (25)



WELCOME GUIDE

Version 1



A MESSAGE FROM THE PRESIDENT

The organizing club Balise 25 is delighted to welcome you to O'France 2026.

The programme includes five days of competition and a sprint event in an exceptional setting, open to both licensed and non-licensed participants, as well as recreational courses available every day.

O'France 2026 is an event designed to showcase both the beauty of our sport and the richness of our region.

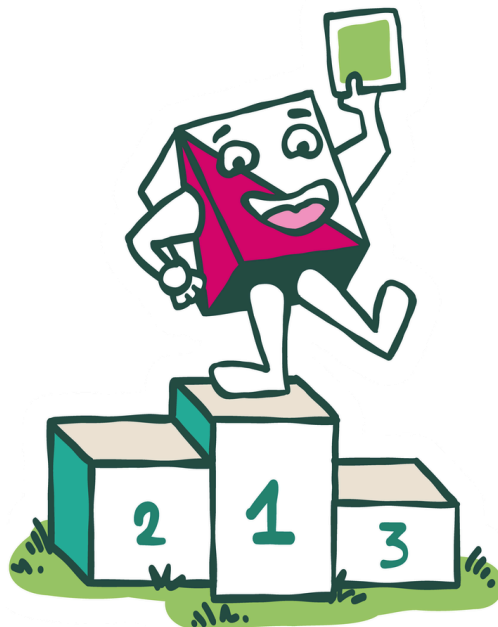
Whether you are here to compete, discover or simply enjoy yourself, we hope you will have a wonderful stay in our region and make the most of the races, activities and landscapes on offer.

On behalf of our 80 volunteers, we wish you all an excellent competition and an unforgettable experience!

VALERIE POURRE

Table of contents

OUR PARTNERS	-----	p.04
EVENT PROGRAMME	-----	p.05
EVENT LOCATION	-----	p.06
EVENT CENTER	-----	p.07
IREGISTRATION / SIAC (SI AIR+) / FINISH	-----	p.08
THE RACES	-----	p.09
SPRINT EVENT	-----	p.14
TRAINING	-----	p.15
ARENA & SERVICES	-----	p.16
MOTORHOME PARKING / CHILDCARE	-----	p.18
TOURISM	-----	p.19
ACKNOWLEDGEMENTS	-----	p.23



OUR PARTNERS

Behind this event, there are also committed partners standing by our side. We would like to thank them for their trust, support and contribution to this wonderful adventure!



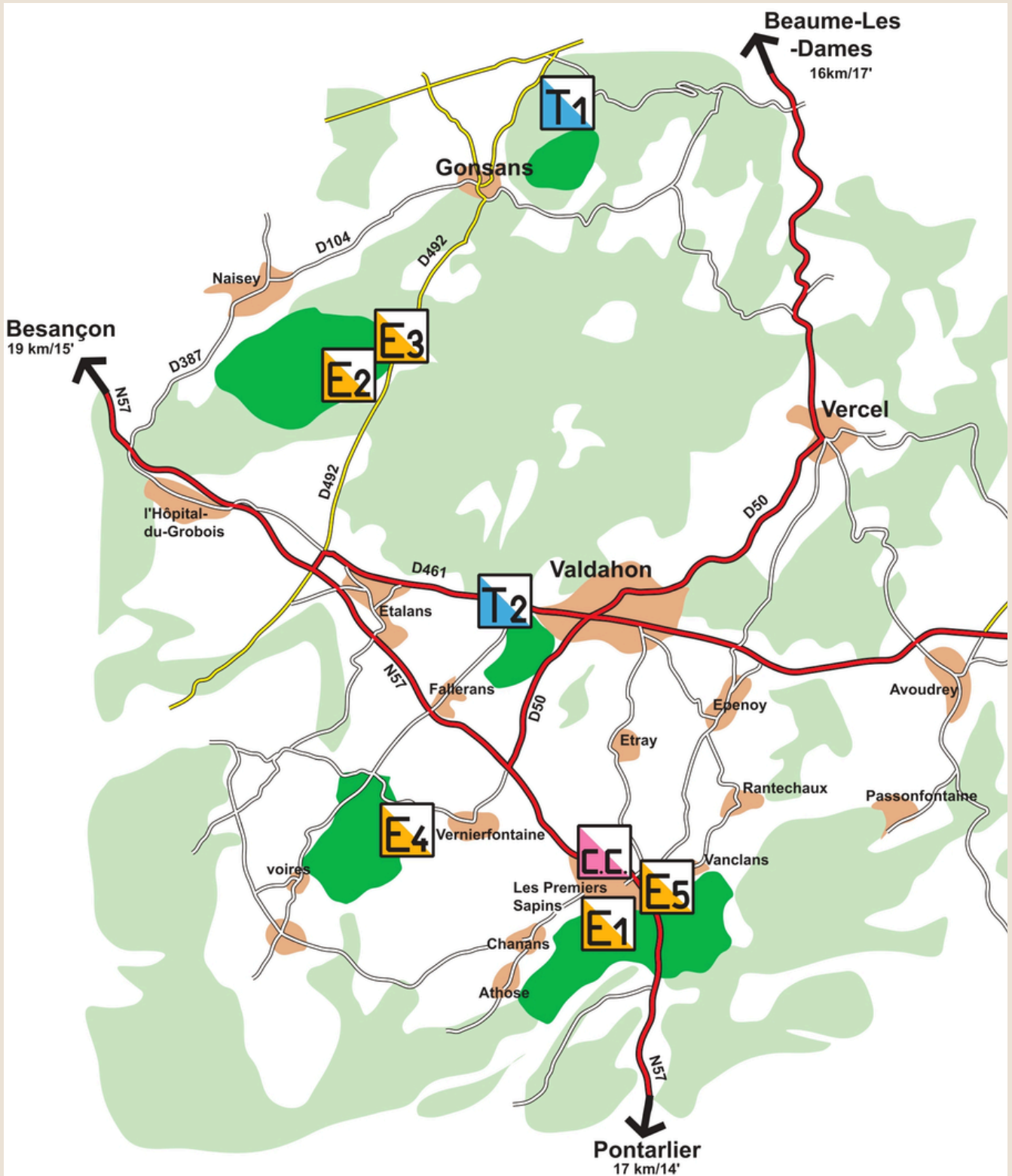
PROGRAMME

During the week, O'France 2026 offers five orienteering races on a variety of terrains in the heart of the Doubs region.

Below you will find the programme of the different races and events taking place throughout the week.

SATURDAY, JULY 25	WELCOME / EVENT CENTER		LES PREMIERS SAPINS
SUNDAY, JULY 26	WELCOME / EVENT CENTRE		LES PREMIERS SAPINS
MONDAY, JULY 27	STAGE 1	LD	LES PREMIERS SAPINS
TUESDAY, JULY 28	STAGE 2	MD	ETALANS
WEDNESDAY, JULY 29	STAGE 3	LD	ETALANS
THURSDAY, JULY 30	REST DAY / SPRINT EVENT	SPRINT	VAL DE CONSOLATION
FRIDAY, JULY 31	STAGE 4	MD	VERNIERFONTAINE
SATURDAY, AUGUST 1	STAGE 5	MD	LES PREMIERS SAPINS

LOCATION



EVENT CENTER

The entire O'France 2026 organising team will be delighted to welcome you on Saturday, July 25 and Sunday, July 26, 2026, at the Multi-Sports Hall of Les Premiers Sapins, from 10:00 a.m. to 7:00 p.m.

An information and registration desk will also be available at each competition venue from Monday, July 27 onwards.

Information: During your visit to the registration desk, you will be able to collect your competitor envelope. One envelope will be provided for each participant.

Envelopes will be distributed according to bib number. You can find your bib number on the start lists available on the event website or displayed at the venue.

Each envelope will contain:

- A bib number
- Control descriptions for the week
- Any tickets purchased during registration

To collect your training maps and any pre-ordered event clothing, simply present your competitor envelope at the relevant stands.

YOU WILL ALSO HAVE THE OPPORTUNITY TO:

- ✓ Purchase training maps
- ✓ Visit the event shop
- ✓ Purchase food and drink vouchers
- ✓ Purchase food and drinks at the refreshment stand
- ✓ Meet the childcare team if needed
- ✓ A tourist information stand will be available throughout the event, with representatives from the Portes du Haut-Doubs Community of Municipalities and local tourist offices on hand to help you discover the region.



Getting to Registration

Signposting : 47.097906, 6.343131

Parking : Parking will be available in the Town Hall car park and the surrounding areas.

→ Follow the event signposting to reach the registration desk on foot.

INSCRIPTIONS

20
JUNE 2026

REGISTRATION
DEADLINE

Registration is open until June 20, 2026, through the Sportorama website.

No registrations will be accepted after this date.

Participants may still register on site for the non-timed recreational courses offered at each stage.

GREEN

BLUE

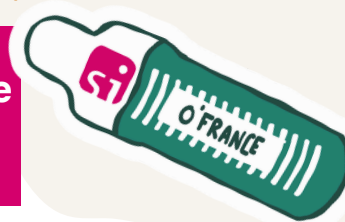
YELLOW

SPORTORAMA



SI AIR

SPORTident Air+ will be available and active on all stages.



FINISH

Maps will not be collected at the finish. We kindly ask all participants to respect fair play and not share the maps with other competitors.

THE RACES

STAGE 1

LONG DISTANCE



DATE

JULY 27, 2026



LOCATION

LES PREMIERS SAPINS



MAP

BAS DES CONCHES



SIGNPOSTING STARTS AT

47.097906, 6.343131



DISTANCE FROM THE EVENT

CENTRE
0 KM



MAP

MAP SCALE :

1/15000 ÈME

1/10000 ÈME

1/7500 ÈME

POUR CERTAINES CATÉGORIES

MAPPER :

FRANCK DEHAVANNE



ORGANISER

COURSE SETTER :

ALAIN POURRE

CONTROLLER :

VALENTIN CHAREYRE

TRAINEE CONTROLLER :

PASCAL BOURDARIE

EVENT ADVISER :

ELOISE LOUVET

FEDERATION DELEGATE :

DENIS GENEVES



SCHEDULE

REGISTRATION :

AT THE ARENA FROM 08:00.

FIRST START :

09:30

COURSE CLOSURE :

3 HOURS AFTER THE LAST
START



INFORMATION

THE START IS
APPROXIMATELY 2 KM
FROM THE ARENA.

A LIMITED NUMBER OF DRY
TOILETS WILL BE
AVAILABLE AT THE START.

WE KINDLY ASK YOU TO
RESPECT THE VENUE AND
THE LOCAL RESIDENTS.

THE RACES

STAGE 2

MIDDLE DISTANCE



DATE

28 JUILLET 2026



LOCATION

NAISEY LES GRANGES
ETALANS



MAP

LE DESERT 2



SIGNPOSTING STARTS AT

47.197285, 6.274959



DISTANCE FROM THE EVENT

CENTRE
15 KM



MAP

MAP SCALE :

1/10000 ÈME

1/7500 ÈME

MAPPER :

MICHEL DUBOC



ORGANISER

COURSE SETTER :

EDDIE WYMER

CONTROLLER :

PHILIPPE POGU

EVENT ADVISER :

BERNARD MORTELIER

FEDERATION DELEGATE :

DENIS GENEVES



SCHEDULE

REGISTRATION :

AT THE ARENA FROM 08:00.

FIRST START :

09:30

COURSE CLOSURE :

2 HOURS AFTER THE LAST
START

THE RACES

STAGE 3

LONG DISTANCE



DATE

29 JUILLET 2026



LOCATION

NAISEY LES GRANGES
ETALANS



MAP

LE DESERT 2



SIGNPOSTING STARTS AT

47.197285, 6.274959



DISTANCE FROM THE EVENT

CENTRE
15 KM



MAP

MAP SCALE :

1/15000 ÈME

1/10000 ÈME

1/7500 ÈME

MAPPER :

MICHEL DUBOC



ORGANISER

COURSE SETTER :

KYLIAN WYMER

CONTROLLER :

PHILIPPE POGU

EVENT ADVISER :

ADELIN MORVAND

FEDERATION DELEGATE :

DENIS GENEVES



SCHEDULE

REGISTRATION :

AT THE ARENA FROM 08:00.

FIRST START:

09.30

COURSE CLOSURE :

3 HOURS AFTER THE LAST
START

THE RACES

STAGE 4

MIDDLE DISTANCE



DATE

31 JUILLET 2026



LOCATION

VERNIERFONTAINE



MAP

BOIS DE LA BOUHARD



SIGNPOSTING STARTS AT

47.109081, 6.298856



DISTANCE FROM THE EVENT

CENTRE
5 KM



MAP

MAP SCALE :

1/10000 ÈME

1/7500 ÈME

MAPPER :

RUI ANTUNES

JOSE MANUEL GALVEZ



ORGANISER

COURSE SETTER :

DANIEL PAPILLON

CONTROLLER :

VALENTIN CHAREYRE

EVENT ADVISER :

MATHIEU HARNIST

FEDERATION DELEGATE :

DENIS GENEVES



SCHEDULE

REGISTRATION :

AT THE ARENA FROM 08:00.

FIRST START :

09:30

COURSE CLOSURE :

2 HOURS AFTER THE LAST
START

THE RACES

STAGE 5

MIDDLE DISTANCE



DATE

1ER AOUT 2026



LOCATION

LES PREMIERS SAPINS



MAP

LE ROCHER CHARMEUX 2



SIGNPOSTING STARTS AT

47.097906, 6.343131



DISTANCE FROM THE EVENT

CENTRE
2 KM



MAP

MAP SCALE :

1/10000 ÈME

1/7500 ÈME

POUR CERTAINES CATÉGORIES

.....

MAPPER :

ALAIN POURRE



ORGANISER

COURSE SETTER :

ALAIN POURRE

.....

CONTROLLER :

VALENTIN CHAREYRE

.....

EVENT ADVISER :

RÉGIS FLAMENT

.....

FEDERATION DELEGATE :

DENIS GENEVES



SCHEDULE

REGISTRATION :

AT THE ARENA FROM 08:00.

.....

FIRST START :

09:00

.....

COURSE CLOSURE :

2 HOURS AFTER THE LAST
START



LES INFORMATIONS

DÉPART EN CHASSE : UNIQUEMENT POUR LES CATÉGORIES H/D21 - H/D20 - H/D18 ET DANS LA LIMITE DE 30 MINUTES APRÈS LE PREMIER AU CLASSEMENT GÉNÉRAL DES 4 ÉTAPES.

THE RACES

ANIMATION SPRINT

SPRINT



DATE

30 JUILLET 2026



LOCATION

VAL DE CONSOLATION



MAP

VAL DE CONSOLATION



SIGNPOSTING STARTS AT

47.141770, 6.589513



DISTANCE FROM THE EVENT

CENTRE
28 KM



MAP

MAP SCALE :

A VENIR



MAPPER :

A VENIR



ORGANISER

COURSE SETTER :

ALYSSIA WYMER



SCHEDULE

REGISTRATION :

AT THE ARENA FROM 09:00.



FIRST START :

10:00 A.M.



COURSE CLOSURE :

1 HOUR AFTER THE LAST
START



INFORMATION

SIGNPOSTING: IT IS ESSENTIAL THAT ALL PARTICIPANTS FOLLOW THE EVENT SIGNPOSTING. THE D39 ROAD WILL OPERATE AS A ONE-WAY ROAD DURING THE EVENT.

INFO: THIS IS A SPRINT ORIENTEERING EVENT. THREE OR FOUR COURSES WILL BE OFFERED. NO OVERALL CLASSIFICATION WILL BE ESTABLISHED, BUT RESULTS WILL BE AVAILABLE FOR EACH COURSE.

TRAINING

DETRAINING SESSIONS WILL BE AVAILABLE TO HELP YOU FAMILIARISE YOURSELF WITH TERRAIN SIMILAR TO THAT OF THE COMPETITION STAGES.



DATE

FROM JULY 25 TO AUGUST 1, 2026



TRAINING MAPS

TRAINING MAPS ARE AVAILABLE FOR A FLAT RATE OF €5 PER MAP. THEY CAN BE ORDERED DURING THE REGISTRATION PROCESS.

CONTROLS ON THE TRAINING COURSES WILL NOT HAVE SPORTIDENT UNITS INSTALLED

GONSANS



PARKING

CENTRE CYNEGETIQUE DE GONSANS



DISTANCE FROM THE EVENT
CENTRE
22 KM



MAP

MAP SCALE : 1/10000ÈME



INFORMATION

VISITORS WILL HAVE THE OPPORTUNITY TO EXPLORE THE HUNTING AND WILDLIFE CENTRE.
FOR MORE INFORMATION, PLEASE VISIT THE EVENT WEBSITE.



VALDAHON



PARKING

TO BE CONFIRMED



DISTANCE FROM THE EVENT
CENTRE
8 KM



MAP

MAP SCALE : 1/10000ÈME



ARENA

REFRESHMENT STAND

A REFRESHMENT STAND WILL BE AVAILABLE EACH DAY AT THE COMPETITION VENUE. €10 VOUCHER CARDS WILL BE AVAILABLE FOR PURCHASE AT THE REGISTRATION DESK AND CAN BE USED TO BUY FOOD AND DRINKS AT THE REFRESHMENT STAND.

ANY UNUSED VOUCHERS REMAINING ON THE CARD MAY BE REFUNDED AT THE END OF THE EVENT.

PAYMENTS CAN BE MADE BY CREDIT CARD OR CASH.

EVENT SHOP

AN ONLINE SHOP IS AVAILABLE. PRODUCTS CAN BE RESERVED THROUGH OUR WEBSITE, WITH PAYMENT TO BE MADE WHEN COLLECTING YOUR ITEMS.

THE EVENT SHOP WILL BE PRESENT AT THE COMPETITION VENUES THROUGHOUT THE WEEK. PAYMENTS CAN BE MADE BY CREDIT CARD OR CASH.

ADDITIONAL PRODUCTS WILL BE AVAILABLE SOON, BUT YOU CAN ALREADY PRE-ORDER THE FOLLOWING ITEMS THROUGH THE WEBSITE:

OFFICIAL ORIENTEERING JERSEY



20€

S - M - L - XL - XXL

17€

120 - 130 - 140 - 150

OFFICIAL EVENT POSTER



4€

A3 - 250g - GLOSS FINISH

ARENA

TOILETS

DRY TOILETS WILL BE INSTALLED AT ALL COMPETITION VENUES.

STANDS

OUR EQUIPMENT PARTNERS WILL BE PRESENT DURING THE EVENT. THE EXACT DATES ARE YET TO BE CONFIRMED.

ORIENTSPORT



AIRXTREM



LABVENTURE



MOTORHOME

OVERNIGHT PARKING FOR MOTORHOMES WILL BE AVAILABLE AT THE COMPETITION VENUES FOR STAGES 1, 2, 3, 4 AND 5



THE PARKING AREAS WILL BE CLOSED TO VEHICLE ACCESS AFTER 21:00



OTHER PARKING AREAS

SEVERAL MOTORHOME PARKING AREAS ARE AVAILABLE NEAR THE EVENT VENUES, INCLUDING THE MOTORHOME AREA AT THE MUSÉE DES MAISONS COMTOISES, WHICH OFFERS 20 PITCHES.

VIDANGE

TWO MOTORHOME SERVICE POINTS WILL BE AVAILABLE FOR WASTE DISPOSAL AND WATER SERVICES :

- AU MUSÉE DES MAISONS COMTOISES
- AU VAL DE CONSOLATION

RESPECT DES LIEUX

MOTORHOME USERS MUST BE SELF-SUFFICIENT IN MANAGING THEIR WASTE AND ARE KINDLY ASKED TO RESPECT THE SITES AND FACILITIES MADE AVAILABLE TO THEM.

PLEASE USE YOUR OWN TOILET FACILITIES AT THE COMPETITION VENUES, UNLESS TOILETS PROVIDED BY THE ORGANISERS ARE AVAILABLE.

CHILDCARE

A CHILDCARE SERVICE WILL BE AVAILABLE DURING THE EVENT FOR CHILDREN AGED 2 TO 11 YEARS.

TO REGISTER YOUR CHILD, AN ONLINE REGISTRATION FORM AVAILABLE ON THE EVENT WEBSITE MUST BE COMPLETED.

DEPENDING ON START TIMES, PARENTS MAY PROVIDE COLD MEALS ONLY FOR THE CHILDCARE VOLUNTEERS TO GIVE TO THEIR CHILDREN.

TO ALLOW AS MANY CHILDREN AS POSSIBLE TO BENEFIT FROM THE SERVICE, CHILDCARE SESSIONS WILL BE LIMITED TO A MAXIMUM OF 3 HOURS.

IT WILL ALSO BE POSSIBLE TO MEET THE CHILDCARE VOLUNTEERS AT THE REGISTRATION DESK ON SATURDAY AND SUNDAY.

TOURISM

TOURIST INFORMATION OFFICE

FIND INFORMATION ABOUT THE DEPARTMENT AND DISCOVER THE REGION ON THE WEBSITES OF THE LOCAL TOURIST INFORMATION OFFICES:

[Office de
tourisme du
Doubs](#)

[Office de
tourisme des
Montagnes du
Jura](#)

[Office de
tourisme du
Pays de
Montbéliard](#)

[Office de
tourisme de
Besançon](#)

[Office de
tourisme Doubs
Baumois](#)

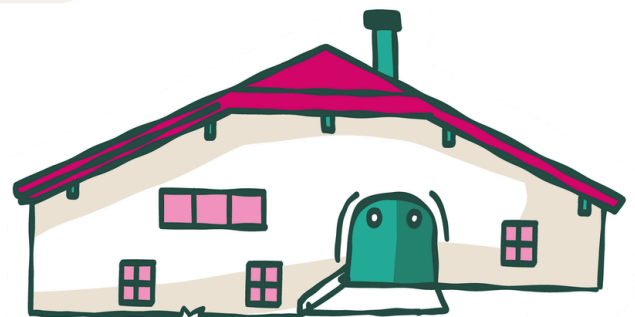
[Office de
tourisme de la
Vallée de la loue](#)

[Office de tourisme
Destination Haut
Doubs](#)

[Office de
tourisme du
Pays Horloger](#)

[Office de
tourisme du Val
Marnaysien](#)

[Office de tourisme
du Pays de Sancey
Belleherbe](#)



TOURISM

IN PARTNERSHIP WITH DOUBS TOURISME, WE ARE PLEASED TO OFFER A SELECTION OF HALF-DAY TURNKEY EXCURSIONS.

EACH EXCURSION INCLUDES COACH TRANSPORTATION DEPARTING FROM LES PREMIERS SAPINS OR THE VAL DE CONSOLATION SITE, AS WELL AS GUIDED TOURS AND/OR INCLUDED ACTIVITIES.

FULL EXCURSION DETAILS AND BOOKING INFORMATION CAN BE FOUND ON THE EVENT WEBSITE : [HTTPS://DOUBS-CONGRES.COM/EVENEMENT/JOURNEES-OFRANCE-2026/INSCRIPTION](https://doubts-congres.com/evnement/journees-ofrance-2026/inscription)



PROFITEZ DE L'O'FRANCE 2026

Découvrez le Doubs

DES DEMI-JOURNÉES TOURISTIQUES CLÉ EN MAIN !



MONTEZ
DANS LE BUS,
ON S'OCCUPE
DE TOUT !



TRANSPORT
EN AUTOCAR
ALLER-RETOUR



ENTRÉES ET
VISITES INCLUSES



VISITES GUIDÉES,
DÉGUSTATIONS,
ANIMATIONS...



DÉCOUVERTES &
SOUVENIRS
GARANTIS



DÉPART DEPUIS
LA COMMUNE DES
PREMIERS SAPINS

AU PROGRAMME

 <p>DIMANCHE 26 JUILLET 13h30 à 18h30</p>	 <p>DIMANCHE 26 JUILLET 13h30 à 18h30</p>	 <p>JEUDI 30 JUILLET 13h30 à 18h30</p>
 <p>CHÂTEAU DE JOUX & ACTIVITÉS NAUTIQUES</p> <p>Visite guidée du Château de Joux, séance de paddle ou canoë sur le lac de Malbuisson.</p>	 <p>SAUT DU DOUBS & CROISIÈRE COMMENTÉE</p> <p>Visite du Saut du Doubs, découverte du tuyé de Papy Gaby, dégustation de produits locaux et animation surprise.</p>	 <p>SALINE ROYALE & VIGNOBLE D'ARBOIS</p> <p>Entrée et visite guidée de la Saline Royale, visite d'une cave viticole à Arbois.</p>
 <p>JEUDI 30 JUILLET 13h30 à 18h30</p>	 <p>JEUDI 30 JUILLET 9h00 à 13h00</p>	 <p>JEUDI 30 JUILLET 9h00 à 13h00</p>
 <p>BESANÇON & CHOCOLATERIE LE CRIOLLO</p> <p>Visite guidée du cœur historique avec guide conférencier, visite guidée de la Chocolaterie Le Criollo.</p>	 <p>CHÂTEAU DE JOUX & ACTIVITÉS NAUTIQUES</p> <p>Visite guidée du Château de Joux, séance de paddle ou canoë sur le lac de Malbuisson.</p>	 <p>SAUT DU DOUBS & CROISIÈRE COMMENTÉE</p> <p>Visite du Saut du Doubs, découverte du tuyé de Papy Gaby, dégustation de produits locaux et animation surprise.</p>



**PLACES
LIMITÉES !**

INSCRIPTIONS

INSCRIPTIONS SUR LE SITE DE DOUBS TOURISME
VIA LE LIEN



VISIT IDEAS

LE MUSÉE DES MAISONS COMTOISES

THE WHOLE OF FRANCHE-COMTÉ IN ONE OPEN-AIR MUSEUM!



© BEN BECKER

The Nancray Museum Park invites visitors to discover the Franche-Comté region through its history, architecture, traditional skills, agriculture and contemporary challenges.

As you explore the farmhouses, craftsmen's workshops and Comté cheese dairy dating from the 17th to the 19th centuries, all carefully restored, furnished and equipped, you will discover how rural life and local expertise have shaped the lives of the region's inhabitants for more than 350 years.

Beyond the historic interiors, the museum's eight themed gardens invite visitors to stroll, relax and enjoy the peaceful surroundings.

The museum's collection of domestic animals contributes both to the visitor experience and to the ecological management of the park. Flower meadows, orchards, ponds, cabins and land art installations can be discovered throughout the site.

Temporary exhibitions, events and daily activities provide inspiration and offer plenty of reasons to return to the museum.

In 2026, LEGO® bricks take centre stage at the museum, with exhibitions, artist installations and a competition!

LE DINO ZOO



© PIERRE ANTOINE BOILLON

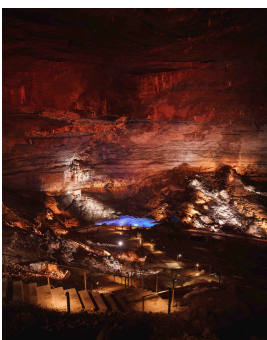
Located close to the Les Premiers Sapins Event Centre, this park is the perfect destination for children aged 3 and over, offering an exciting journey into the fascinating world of dinosaurs.

Spend an afternoon exploring a trail featuring nearly 80 life-size dinosaur sculptures. Younger visitors can also enjoy a range of fun attractions specially designed for children.

A perfect family outing combining discovery, fun and memorable moments between races!

<https://www.dino-zoo.com/fr/>

LE GOUFFRE DE PLOUDREY



Explore the Gouffre de Poudrey, an exceptional geological wonder in the Jura Mountains, located 70 metres underground.

This gigantic cave is home to one of the largest developed underground chambers in France. During a guided tour, discover this magical subterranean world where stalactites and stalagmites have been forming for thousands of years, bearing witness to the remarkable work of water over time.

A fascinating journey into the heart of the earth, revealing one of the region's most impressive natural treasures.

<https://gouffredepoudrey.com/>

© HAPPINESS PRODUCTION

VISIT IDEAS

LE CHATEAU DE BELLEVOIR



© PÉRILPIES & CIE

A must-see in the Sancey-Belleherbe area, the Château de Belvoir was once the centre of the seigneurie and the residence of the Barons of Belvoir.

Open daily from July to August, the castle offers visitors the opportunity to discover numerous archaeological finds and richly furnished rooms. Throughout the tour, you will uncover the fascinating stories of the lords and ladies who shaped the history of Belvoir.

Juillet et Août : de 10h à 11h et de 14h à 17h. Tarifs : 7€ à partir de 12 ans. Nous joindre : 03.81.86.30.34 (heures des repas) et 06.70.28.16.52. Informations : www.chateau-belvoir.com

LE CHATEAU MONTBÉLIARD WURTEMBERG



© MAXIME NEAGALY

Through 15 exhibition rooms, immerse yourself in the history of Montbéliard and its surrounding region.

At the heart of the castle's towers, follow in the footsteps of the remarkable figures who witnessed the transformation of both the castle and the town over the centuries. This immersive journey brings history to life through engaging displays and storytelling, giving a voice to the people who shaped each era.

Ouvert du mercredi au dimanche de 10h à 18h. Billetterie en ligne : <https://www.chateaumontbeliardwurtemberg.fr>

ACKNOWLEDGEMENTS

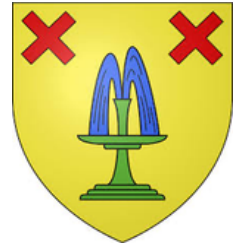
Our sincere thanks go to all the municipalities, clubs and associations whose support and commitment helped make O'France 2026 possible.



ETALANS



NAISEY LES GRANGES



VERNIERFONTAINE

**COMMUNE
VOIRES**



GONSANS

**COMMUNE
FALLERANS**



ETRAY

